



pearson
ferrier®



APT 1 WALMERSLEY MANOR 259 WALMERSLEY

Bury, BL9 6NX

£850 Per Calendar Month

259 WALMERSLEY ROAD

Property at a glance

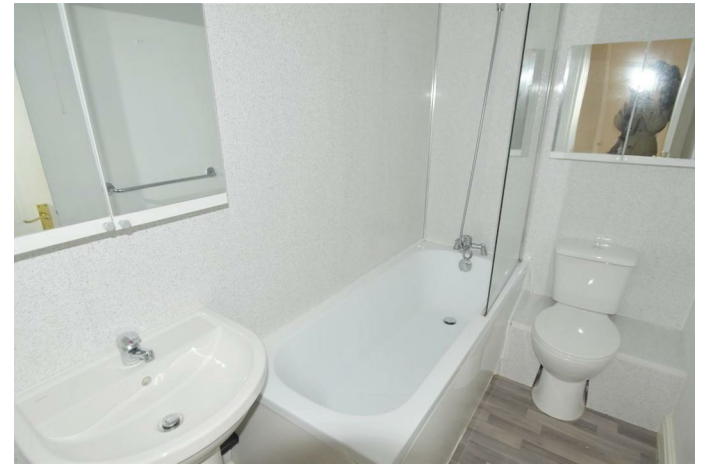
- GROUND FLOOR APARTMENT
- TWO BEDROOMS
- AVAILABLE MID MARCH
- GREAT LOCATION
- COUNCIL TAX BAND B
- EPC RATING D

*****AVAILABLE MID MARCH***** A two bedroom ground floor apartment located in the popular development of Walmersley Manor, conveniently positioned for easy access for Bury town centre and the motorway networks and located in a secure development. The property benefits from electric heating and is double glazed throughout. Briefly, the accommodation comprises: entrance hallway, L shaped lounge, separate kitchen, two bedrooms both with fitted wardrobes in the main and a bathroom with mains powered shower over bath. The property also benefits from an allocated parking space and communal gardens.

Council Tax Band B and EPC Rating D.

Please note there is a holding deposit equivalent to one weeks rent payable to secure the property.





Bury Office
 435/7 Walmersley Road, Bury, Lancashire, BL9 5EU
 Telephone: 0161 764 4440
 Fax: #
 Email: bury@pearsonferrier.co.uk

www.pearsonferrier.co.uk

All statements contained in these particulars are for indicative purposes only and are made without responsibility on the part of Pearson Ferrier and the vendors of this property and are not to be relied on as statements or representations of fact. Potential purchasers should satisfy themselves by inspection or otherwise as to the accuracy of such details contained in these particulars.

